



Fielding Road, London, W4  
Guide Price £1,250,000

**WHITMAN & CO.**  
SALES · LETTINGS · COMMERCIAL



A rare opportunity to purchase this original period property, which is ideally located in the Bedford Park area, offering close proximity to numerous amenities.

The property includes four bedrooms, a bathroom, a large entrance hall, a 31' through reception room, a fitted kitchen, a cloakroom/shower room, a host of original features, and a lovely 43' private garden.

Situated on this extremely sought-after tree-lined residential road. Offering close proximity to Turnham Green tube station and the extensive range of shops, bars and restaurants on Chiswick High Road. No onward chain.



# Fielding Road, W4

Approximate gross internal area

143.53 sq m / 1545 sq ft

(Including Eaves Storage)

Eaves Storage : 9.41 sq m / 101 sq ft

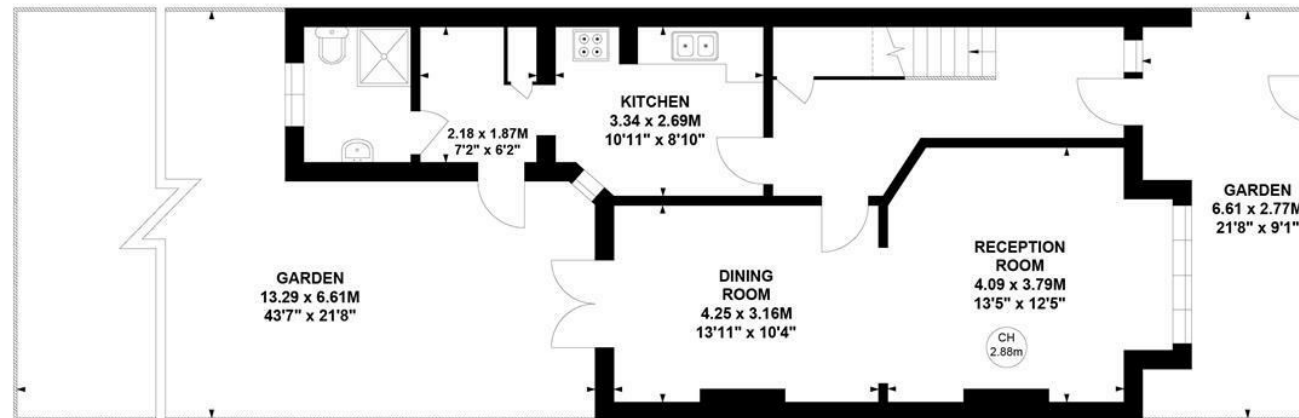
Key :

CH - Ceiling Height



First Floor

Second Floor



Ground Floor

Not to scale, for guidance only and must not be relied upon as a statement of fact.

All measurements and areas are approximate only

- Pretty period property
- Four beds/two baths
- 31' Through reception room

- Sought after residential road
- 43' Private Garden
- No onward chain

Tenure - Freehold  
Local Authority - Ealing  
Council Tax - Band G

